

---

# *Chiltonian*

---

Vol. 5, No. 1

March, 1985

---

## PHOTO FEATURE

The photograph featured in this issue deserves your close attention for several reasons. First we are thankful to Helen Parrish for providing a rare glimpse at the Courthouse as it stood from 1896 until it burned in 1918. As you can see it incorporated an interesting architecture. The statement in the marble at the Courthouse is herewith shown to be in error. This building was not the one torn down to make way for the one currently standing.

Next, the photo captured the images of 26 persons and two horses. The members of Helen's family in front of the millinery store are the only ones which are positively identified. The horse standing nearest the photographer appears to have no head; he was obviously swishing flies at the time of exposure. If anyone is able to identify any of the other people in the photo, please let us know.

Using Helen's mother as our datum we estimate that the picture was made circa 1904. The buildings portrayed would have been erected for about three years at that time and stood in the spaces currently occupied by Roper's Furniture, Kenwin, Moore's Insurance, and Davenport Drug. At that time two of the proprietor's were Popwell, next to the alley, and Evans at the millinery store.

## ELECTION OF OFFICERS

After a hard fought but close campaign the following officers were chosen for the positions indicated:

President	Ben Roberts
Vice-President	Mary L. Richardson
Sec'y/Treasurer	Sue H. Thomas
Public Relations	Marilyn L. Colson
Historian	Nell Thomas

## MARK YOUR CALENDAR

The meeting for this quarter has been advanced by one week so that final preparations can be made for our first ever Open House. As a direct result of The County Commissioners having signed the Proclamation setting April 14 as Historic Heritage Day and on the suggestion of Marilyn Colson, the Society is making arrangements for a showing of some of the houses in and around Clanton for this year. Be sure to attend the meeting as we are certain to need your help in this venture. The meeting will be at the Chilton/Clanton Public Library, Monday evening, April 8th at 7:30 p.m.

## EARLY CIVIL WAR APPLICATIONS

Many of you will remember the List of Pensioners which was published in these columns last year. Now when you go into the basement of the Probate Office you will find a great convenience in store. These records were previously stored in bundles by year and not always alphabetically. They have been separated by individual and placed in folders for each person who filed.

Some of these are duplicates of the documents on file at the State Archives but some are unique in that they exist only in OUR Probate Office; a number of people who submitted applications were not approved by the "Examining Board" but have been preserved as part of the Probate files all these years. The new envelopes have the name of the applicant and his or her husband's unit printed on the outside for the ease of researchers; this will also, we are hopeful, extend the life of these documents in that only the ones being sought need be handled in the future.



*Published at Clanton, Alabama*

*Quarterly by the Chilton County Historical Society and Archives, Inc.; A non-profit organization.*

*Printed by Automotive Publishing Company; Tommy and Mark Patterson, Proprietors.*

*Typesetting by Hayman Associates, Inc.; John and Clara Ruth Hayman, Proprietors.*

*Compiled and edited by Ben Roberts.*

*Contributors: Linda and John Klinner, Betty Collins, Madge Wilbanks, Sue Thomas, Helen Parrish, and Mary Richardson.*

*Annual Memberships Available*

*\$5.00 Student      \$7.00 Single  
         \$10.00 Couple  
         \$100.00 Lifetime*

*Send check or money order to:*

*Chilton County Historical  
Society and Archives  
P.O. Box 644  
Clanton, AL 35045*

## TAX TIPS

### FOR OLD HOUSE RESTORERS

(The following questions/answers were taken from the *Historic Preservation* journal)

**Q** What federal assistance is available to someone who wants to rehabilitate his own historic home?

**A** Unfortunately the federal government does little specifically to encourage the rehabilitation of one's own home. Direct grants have been unavailable for the last several years. The best tool for historic rehabilitation, the 25 percent Investment Tax Credit enacted in 1981, is only available to owners of income-producing, commercial, industrial or residential rental properties.

**Q** What if I rehabilitate my home and use part of it for a family business or as a home office?

**A** If part of your home qualifies as depreciable business or rental property, then that part is eligible for the tax credit. For example, if part will be used as a doctor's or lawyer's office, or if the second floor is a rental apartment, then you can use the Investment Tax Credit. However, only rehabilitation costs that directly affect the depreciable part of your building are eligible for the credit. Work on common elements, such as heating and plumbing systems, must be prorated to reflect only that percentage of the rehabilitation work that affects the qualifying part of your building. If you are depreciating a second historic home that you rent out to others, the cost of rehabilitating it also qualifies for the 25 percent credit. In any case, the cost of the rehabilitation work must exceed the property's "adjusted basis," a figure roughly equal to the cost of the property plus capital improvements less any depreciation deductions already taken.

**Q** Do all old buildings qualify for the investment tax credit?

**A** They must pass one of three tests. The building must be on the National Register of Historic Places, be a historic building within a National Register Historic District or be designated as a historic structure under a local law approved by the National Park Service. To find out if your building qualifies, call The Alabama Historical Commission in Montgomery.

## OLD FOLKS IN CHILTON

From *The Banner* (Clanton), April 6, 1905

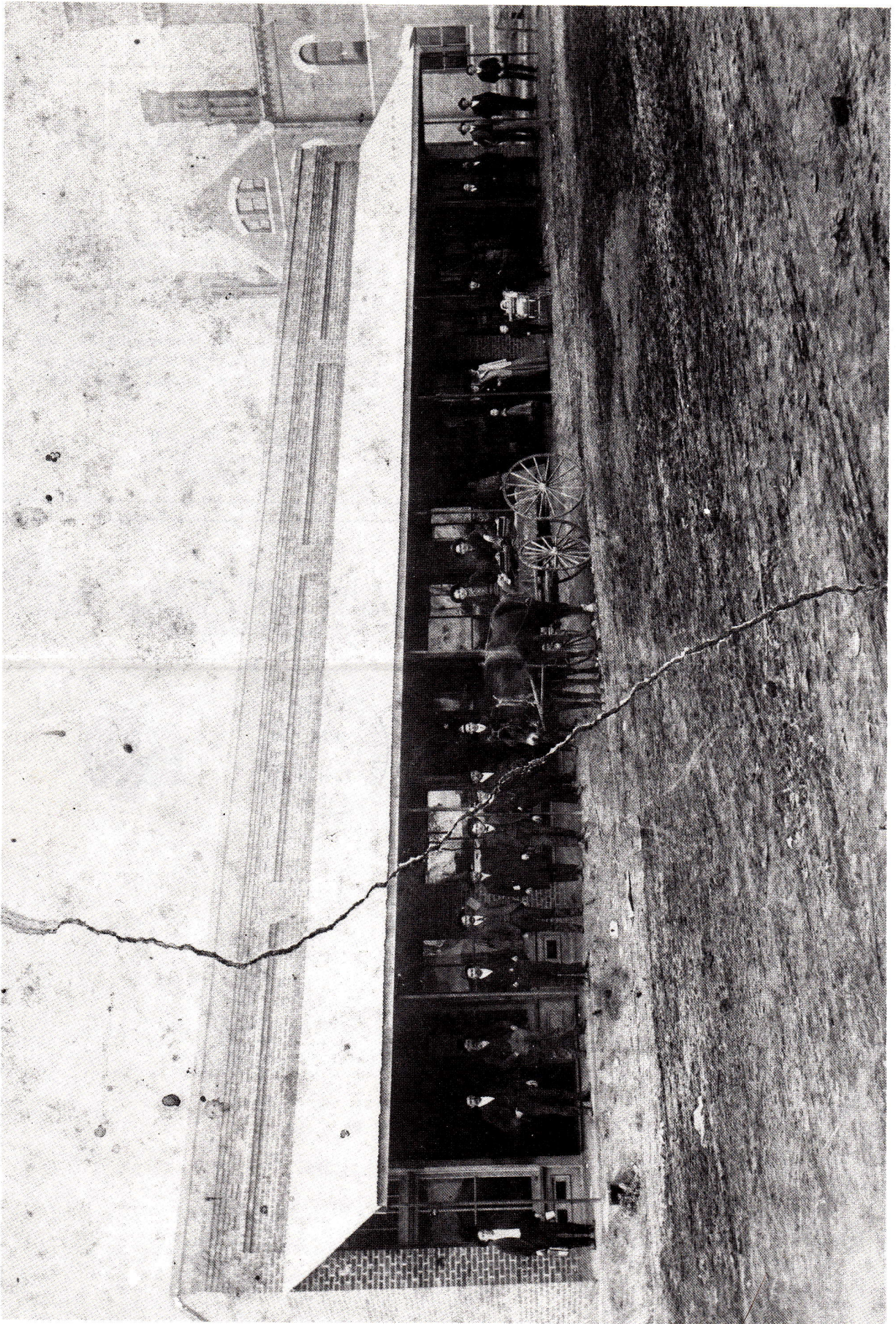
Verbena date line

"... a show at the academy Wednesday evening...one of the greatest features of the entertainment was the presentation of a silver cup to the most popular lady and a bar of soap to the laziest man.

- leading candidates for the former were Miss

(Continued on Page 4)







(Old Folks, cont. from Page 2)

Lula Colley and Miss Julia Lee Gullledge -- Miss Gullledge finally won.

- Mr. Pinkston and Mr. Fike were contestants for the laziest man -- Mr. Pinkston won by a small majority."

From the *Chilton View*, August 16, 1883

"Mr. Robert Roebuck, oldest man in the county, aged 97 years, died near Maplesville last Friday. He has been a citizen of this section (county) for 65 years [since 1818]".

From the *Chilton View*, March 14, 1889

"Tax Collector A. W. Rucker (Elmore County) visited Clanton. He was born in a house situated on the site of the Duke residence when this neck of the woods was known as Goose Pond Precinct, Autauga County."

From the *Clanton Press*, September 19, 1910



Chilton County Historical  
Society and Archives  
P.O. Box 644  
Clanton, AL 35045

## SPECIAL NOTICE

Anyone having old photographs or in contact with someone who has photographs pertaining to the "Old Soldiers' Home" at Mountain Creek, please notify Ben Roberts. Help increase interest in this Chilton County asset and consequently the Confederate Park's attraction to local and non-local visitors. Contact Ben at:

Route 5, Box 398  
Clanton, AL 35045  
(205) 755-5936

"City Council (Clanton) unanimously decided to open the alley-way running from 7th Street to the Railroad."





# Chiltonian

Vol. 5, No. 2

June, 1985

## MARK YOUR CALENDAR

Remember to set aside the second Sunday in July, the 14th, to attend the quarterly meeting. We are fortunate to have local talent to make a presentation of local interest. Linda Klinner and Sally Moore will display slides and discuss the findings of the Architectural Survey which they are conducting. Come one and all to find out what a substantial and interesting heritage we have by virtue of the older houses and buildings throughout Chilton County. Time is 2:00 p.m., and the place is the Chilton/Clanton Public Library Conference Room.

will be 80 in July. He was born in Georgia in the year 1809, and moved to this state in the year 1819. His wife is 75 years old. They have been married sixty years. Mr. Wells is a Protestant preacher, and has charge of four churches in different parts of the county. He travels to each of his appointments on horseback. He don't look to be more than 60 years old.

There are perhaps many other aged people in our county, and the large number mentioned is sufficient to indicate that those wanting to live a long life will find conditions altogether favorable here among the healthful pine hills of Chilton county.

## FROM THE.....

*Chilton County Courier*

12 January 1877

*From The Chilton View (Clanton), April 11, 1889*

Since writing about the old people of Clanton and vicinity, have since been informed that Uncle Johnnie Goodgame, who is 92 years old, and his wife, who is 89, have been a prolific pair. They have 259 decendants, including children, grandchildren, and great-grandchildren. One of their married daughters gave birth to five children in thirteen months.

Mrs. Gross

who is a widow and living five miles from Clanton, is 84 years old.

Elijah Myars

the father of Rev. Mr. Myars, who died three years ago, was 81 years old. He had followed farming all his life, and to this kind of life he felt that he owed his long life.

Rev. W. A. Wells

About 20 minutes to eight o'clock last Monday morning the people of Clanton were surprised by a jarring and shaking of the ground and houses. One man said that he was eating breakfast at the time and was raising a cup of coffee to his mouth when the shock occurred and shook the coffee out on the floor. Another said his little boy, who was in the yard, was shaken down; another that he had many dishes broken. The shock was the subject of conversation during the day, some said it was a boiler exploded some that it was an earth quake. As there has been no explosion of a boiler near here lately, they have now all come to the conclusion that it was an earthquake.

7 September 1877

We learn that Messrs. Coe, Wilson, and Edwards have been employed to collect the taxes claimed to be due Chilton County by the S & N and S.R. & D. Railroads. The taxes claimed are due for the years from 1870-1876

(continued on page 2)



*Published at Clanton, Alabama*

*Quarterly by the Chilton County Historical Society and Archives, Inc.; A non-profit organization.*

*Printed by Automotive Publishing Company; Tommy and Mark Patterson, Proprietors.*

*Typesetting by Hayman Associates, Inc.; John and Clara Ruth Hayman, Proprietors.*

*Compiled and edited by Ben Roberts.*

*Contributors: Linda and John Klinner, Betty Collins, Madge Wilbanks, Sue Thomas, Helen Parrish, and Mary Richardson.*

*Annual Memberships Available*

*\$5.00 Student      \$7.00 Single  
          \$10.00 Couple  
          \$100.00 Lifetime*

*Send check or money order to:*

*Chilton County Historical  
Society and Archives  
P.O. Box 644  
Clanton, Alabama 35045*

(From the... cont. from page 1)

inclusive, and amount to thirty thousand dollars.

### ***The Banner***

**2 August 1906**

Tuesday night the electric light was turned on at the court house, and for the first time in its history Chilton's Court house was illuminated as it should be. It is to be hoped that some of these dark nights the streets of Clanton will also be made walkable for the citizens and the stranger who may be within its gates.

**15 February 1906**

Stacks of poles are laying around and the Southern Bell Telephone Company are ready to put in a local system. Soon the cry of 'Hello' will be heard from one end of town to the other.

The contract for Mr. Pinckard's new residence has been signed by F. P. Archelaus, for \$5,000, and work will be started at once.

**11 January 1906**

RECOLLECTIONS OF EARLY SETTLEMENT OF TALLAPOOSA COUNTY AND ITS CITIZENS. From the Dadeville Spot Cash. Benjamin Walker came from Upsom county, Georgia in the winter of 1838-39 and settled south west of Camp Hill, and opened up a farm since known as the Brummet place. He built about the first frame house in that section. He married a Miss Sweeney. Having inherited a considerable landed estate in Upsom, he returned about 1849, and died there at the advanced age of over ninety years. His oldest son, William, died soon. James married (missing). Thomas Benjamin, Jr., a Russell; Newton died in confederate army at Washington. His daughters - the oldest married Meadows; Sarah, a Pearson; Martha, a Dix; Almira, a Hart; Elizabeth, a Tyus; Sophronia, a Wilmont. His children and his descendants are first class citizens. Providence has granted most of them a long life. Of the eleven children seven are living after sixty-seven years.

Mr. Walker was a man of strong will. He had been a life user of tobacco and on one occasion he attended preaching service at a private house, held in the best room. Having arrived a little late, he was forced to an inconvenient position to get out. He forgot his chew of tobacco and had no convenient place to spit, and after a struggle with his conscience and his sense of decency, spat upon the floor. So disgusted with his act that when he got out he threw away his chew and said he would no longer submit to a habit that would cause him to do such a thing, and he never used it again. Robert Gillam was one of the first settlers of Tallapoosa county. He resided about five miles from Dadeville on the Dudleyville road. He was a member of the old Concord church near his residence. He belonged to the old school of honest citizen, a good example of his class. By his first marriage he had two daughters and one son. The daughters married Doss and Taylor. His son Harry Gillam married first, Caroline Morgan, in 1837, and a second time a Miss Johnson, of Macon county, Alabama, formerly

(continued on page 4)



SECOND AVE, LOOKING WEST FROM COURT HOUSE, TOWER, CLANTON, ALA,

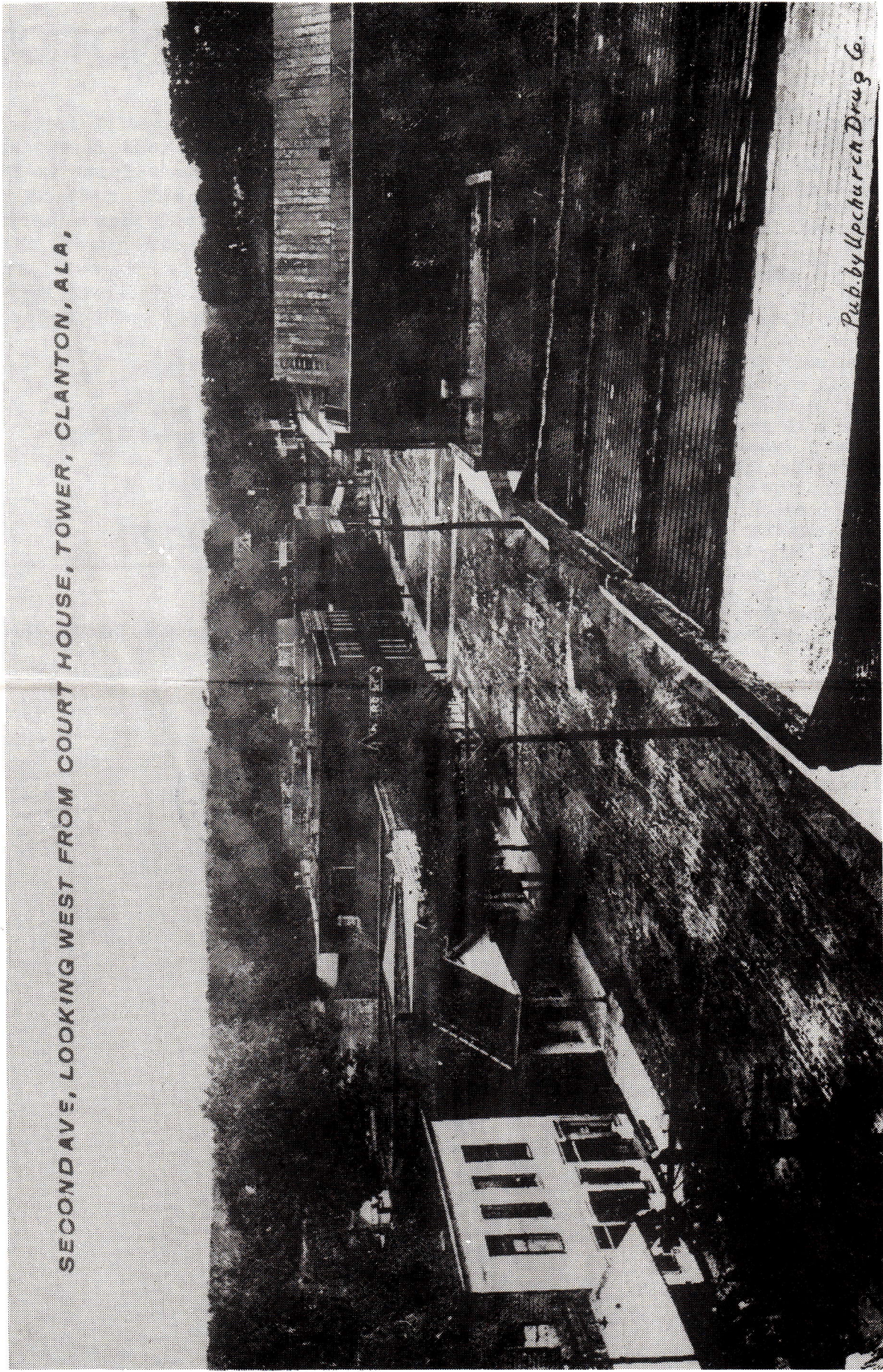


Photo Courtesy Helen E. Parrish



(From the...cont. from page 2)

of Heard county, Georgia. The late Chancellor Harry Gillam was the son of this marriage. There was also a daughter, a well-educated and intelligent lady.

He represented the county in the legislature and died in the prime of life universally lamented by his people.--Old Man.

**Union Banner**

**1 May 1930**

Last Thursday afternoon the City Fire Department was called to the home of Rev. Ernest Childs to look after a blaze that had started around a chimney on top of the house. The firefighters responded promptly and it was an easy matter to get control of the situation before any considerable damage had been done. The house in which Reverend Childs lives is the Methodist parsonage. It is the old home of the late E. A. Matthews, located in close proximity to the Methodist Church building. It was bought by the Methodist congregation some years ago, about the time the church was completed.

## SPECIAL NOTICE

Anyone having old photographs or in contact with someone who has old photographs pertaining to the "Old Soldiers' Home" at Mountain Creek, please notify Ben Roberts. Help increase interest in this Chilton County asset and consequently the Confederate Park's attraction to local and non-local visitors.

Contact Ben at:

Route 5, Box 398  
Clanton, Alabama 35045

or call

(205) 755-5936

---

**Send your newsletters ideas to the CCHS&A Office now!**

**Chilton County Historical  
Society and Archives  
P.O. Box 644  
Clanton, Alabama 35045**





---

# *Chiltonian*

---

Vol. 5, No. 3

October, 1985

---

## QUARTERLY MEETING

The next regularly scheduled meeting of the Chilton County Historical Society & Archives will be held Sunday, October 13th at the Chilton/Clanton Public Library. The meeting will start promptly at 2:00 P.M. in the Conference Room. Attending members are urged to bring guests to hear Miss Lorene Lecroy in a presentation on the early citizens of the western part of Chilton county.

-----

## MICROFILMING PROJECT

Microfilming status remains static, unfortunately. At the earliest convenience of the folks at the Samford University photo/reproduction department this project will be resumed.

In relation to prior microfilming, for those of our members who may be interested, the University of Alabama Archives retains copies of many of the early issues of the Chilton View. Articles, pages or issues missing from our microfilm could possibly still be in tact within this valuable resource.

## NOMINATING COMMITTEE

Volunteers to serve on the nominating committee are requested to make their availability known at this meeting. In the absence of volunteers appointment to the committee will be arbitrarily assigned during the meeting. Have a voice in the selection of your future governing officers. Volunteer!

-----

## GONE BUT NOT FORGOTTEN

It is with sincere regret that we report in this issue the demise of two Society members whose loss will continue to be felt in all of our endeavors and whose deaths will be equally devastating to the county at large. We refer to Mrs. Elizabeth Gill, of Jemison, and to Mrs. R.C. "Myra" Williams, of Clanton. We believe that their spirits live on in the realm of the Greatest Spirit of All. At the last minute we add the name of one of our member's mother to this list. Mrs. Edna Lowe Thompson passed away at noon on the 30th of September, 1985.



## SURVEY DATA

A questionnaire was included with the last issue to which the response was less than gratifying. However, for those who did respond we are obliged to at least share the rather inconclusive results. Individual answers will be provided to those who gave us the most significant input. Ten per cent of the membership responded and none of those expressed a willingness to serve as officers of the society in the near future. In fact, only one respondent indicated any willingness for such service in the future.

Family interests were stated by only half of the people who sent in returns. This yielded one set of people searching a common family genealogy; Betty Collins, Margie Gentry and Scott Headley might be able to share findings about Isaac Gentry (See History of Early Bibb by Mr. U.H. Abrams). Rochelle Brigance and Betty Collins could possibly share information on their Mims research (with so many different Mims families this may only be a remote possibility).

Only one out of seven  
subscribe to a County  
newspaper. Articles published  
before in local papers may not  
have been seen by most  
members. (Get copies from the  
Society for copy and mail  
costs (about 30 pages, 8x10).

## EXCITING ANNOUNCEMENT

A great, new publication is now available to Society members and to the public generally. The Baker County Federal census for the year 1870 has been converted to printed text with a comprehensive and complete index by Society member Betty Collins. The price for this book will be \$20.00 per copy. Place your order today with check or money order to:

[illegible]

ORDER NOW!

CEMETERY CENSUS STATUS

The second volume of the Cemetery Census is nearing completion; there still remains the task of indexing each entry. As of this writing there are 77 cemeteries included, with most of them located in the north half of the county. All in all there are currently more than 5000 entries (some are unmarked graves). The effort will provide a valuable means of family and county research and will be a subject of discussion during the coming meeting to resolve several



## QUARTERLY FEATURE

Photo credit for this month goes once again to Helen Parrish, along with our thanks for her generosity. The first lights at the Court House mentioned in a previous issue probably came from this plant, initially owned and operated by J.P. Vanderveer, Sr., located behind the Masonic Lodge.

-----

### COUNTY'S EARLY NEWSPAPER LOCATED

A trip to the Archives at the University of Alabama provided fruitful information from the first newspaper, the Chilton County Courier, published in this county. The filmstrip is hardly more than 10 or 12 frames in all so we reprint here much of its contents. It appears there were no newspapers published in Chilton county from September 1877 to November 1881.

Chilton County Courier, Sep 1876.

"For Sale. On account of failing health and a press of other business we offer the outfit and good will of the Chilton County Courier for sale, at a sacrifice and upon easy terms. The Courier is the official organ of Chilton county, and the only paper published on the line of the South and North Alabama Railroad, between Birmingham

and Montgomery.

Address:

Wm. A. Collier.

Proprietor Courier.

(P.S.-We will be obliged to our State exchanges if they will give the above a few insertions.)"

From the same film strip(UA Library):

"On Wednesday Mr. Gartman waived examination upon the charge of assault with the intent to murder and in default of \$600.00 bond was remanded to jail. Mr. Chilton, of Montgomery, is the attorney of Mr. Gartman." (Mr. Gartman shot and wounded Mr. B.F. Randolph).

"From the Shelby Guide. We knew a good old citizen of Autauga county, Mr. John Harmann, who died last July. He was born in Switzerland in 1790, was with Napoleon's celebrated campaign in Russia, saw Moscow on fire, was wounded at Liepzig and Waterloo campaign(s), came to America in 1819, settled as a tailor at Vernon, Autauga county, in 1821. He had three sons in the Confederate Army, as brave and gallant as sons could be. One was severely wounded and another followed Lee in all his campaigns, fought in every battle and was not touched."



Chilton County Historical  
Society and Archives  
P.O. Box 644  
Clanton, AL 35045

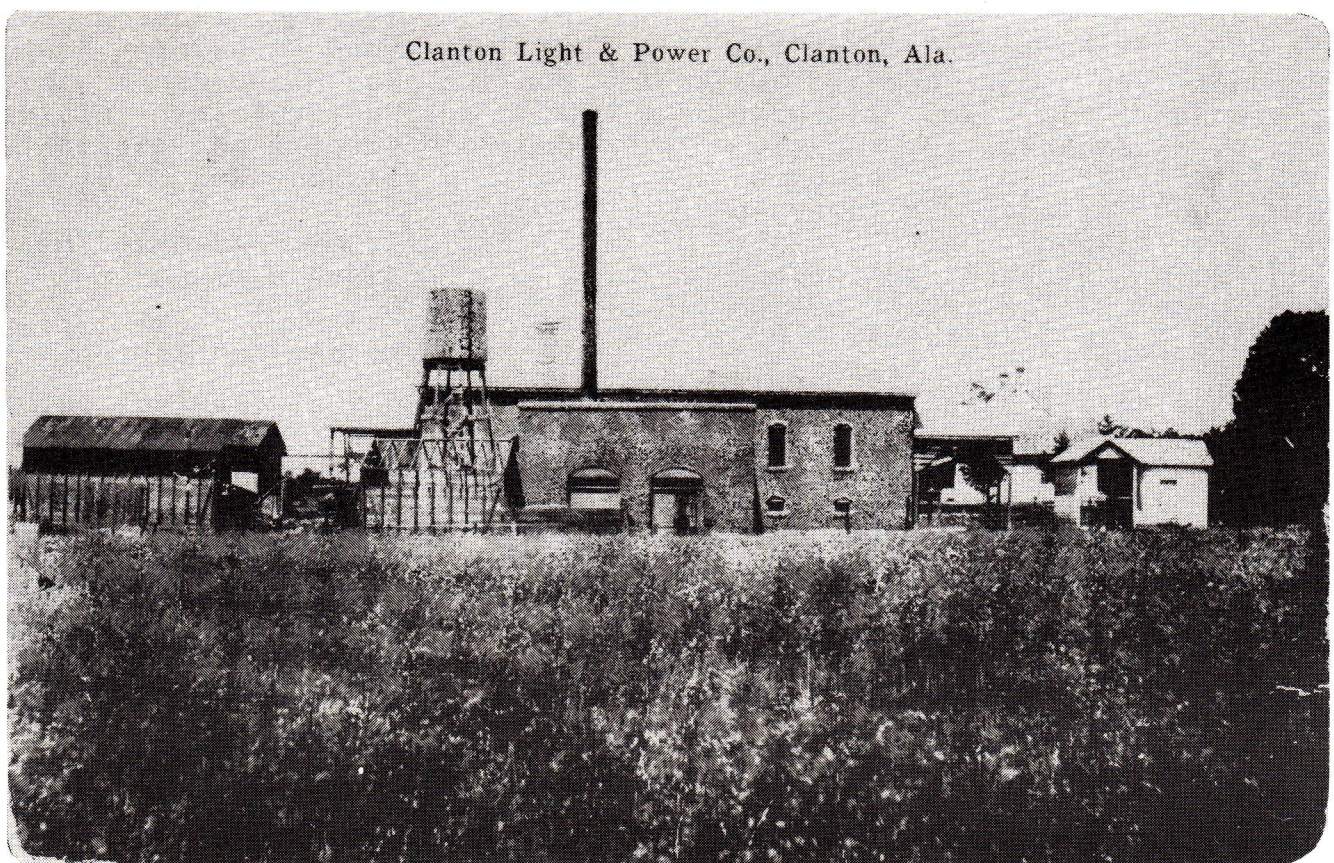


Photo Courtesy Helen E. Parrish



---

# *Chiltonian*

---

Vol. 4, No. 4

December, 1985

---

## ALLONS NOUS

In my last chance as president of the Society to do so, allow me to share a few thoughts with you. The membership of our Society has grown and currently stands at about 70 (Prior members who paid their dues would handily increase this). About 25 % of our members are Lifetime participants. To accomplish any significant progress in preservation and conservation of our history we must find the wherewithal to enlarge membership and to increase interest and participation. On-going projects should be advanced to satisfactory completion and continuing projects such as the Heritage Day (Open House) require greater and more enthusiastic efforts outside as well as within the membership. Hindsight being the great aid it is, we must budget and expend our funds more accurately to preclude year-end turn-ins such as that encountered this year. This does not imply that we should be wasteful but we must not let October slip up on us. Finally, let me express my deep and sincere appreciation to all those who contributed to the successes achieved during the past two years.

## ELECTION MEETING

The fourth Quarterly Meeting of the Chilton County Historical Society will be held at the Chilton/Clanton Public Library at 2:00 P.M. on the 12th of January, 1986. The meeting will be devoted to election of new officers and transfer of all duties from immediate past officers. It is important members attend to assure that programs, finances and projects for the coming year be organized and properly planned. Remember, January 12th, 1986 at 2:00 P.M.

## PHOTO CREDIT

The house in the photograph on page 4 was the Evans place. Time frame: early 1930's. The structure was replaced by the Court House SE parking lot. We are indebted once again to Miss Helen Parrish.

## EARLY VOTING PRECINCTS

To provide some meaningful information for those researching census records we reprint the earliest recorded precincts (Beats) for Chilton (formerly Baker) County. These precincts are valid only for the 1870 and 1880 censuses. (See page 2).



Precinct No. 1.

Commencing at the North East Corner of the County, where the Waxahatchie Creek enters the Coosa River, thence up said creek to where it crosses the Shelby County Line, thence along Shelby Line to the Range Line between Ranges 13 and 14, thence South along said line to Township line between Township 22 and 23, thence East along said line to Yellow Leaf Creek, thence down said creek to Coosa River, thence up Coosa River to place of beginning.

Place of Voting in said Precinct to be at Mims' Cross Roads.

(Amended: Probate Minutes; Book 2, Page 131.)

Precinct No. 2.

Commencing where the County Line crosses the Range line between Ranges 13 and 14, thence West along the County Line to the North West corner of the County, thence South along the County Line to Township line, between Townships 22 and 23, thence East along said Township Line to Range Line between Ranges 13 and 14, thence North along said Range line to place of beginning.

Place of Voting in said Precinct to be at Providence Church.

(Amended: Page 192.)

Precinct No. 3.

Commencing where Township line between 22 and 23 crosses Range Line between Ranges 13 and 14, thence West along said line to where said line crosses Montgomery and Tuscaloosa road, thence along said road to where it crosses Little Mulberry Creek, thence up said creek to the Range line between 13 and 14, thence North along said Range line to the place of beginning.

Place of Voting in said Precinct to be at Benson's.  
(Amended: See page 191, 194.)

Precinct No. 4.

Commencing where the Yellow Leaf Creek enters the Coosa River, thence up said creek to township line between townships 22 and 23, thence west along said township line to Range line between Ranges 13 and 14, thence south along said Range line two miles South of the township line between townships 21 and 22, thence East one mile East of Range line between ranges 14 and 15 to the south east corner of section 7 township 21 range 15 thence north along the section line to Smith's Ferry Road, thence East along said road to Hog Creek, thence down said creek to Walnut creek, thence down Walnut creek to Coosa River, thence up said river to Yellow Leaf Creek.

Place of Voting in said Precinct to be at Clanton.

(Amended: April 1876; page 190, 194, 131; Aug 1880; page 70.)

Precinct No. 5.

Commencing where Walnut Creek empties into Coosa River, thence up said creek to Hog creek, thence up Hog Creek to Smith's Ferry Road thence West along said road to section line between sections 7 and 8 in T 21 R 15, thence South to South East Corner of said section 7, thence West to range line between range 14 and 15, thence south along said range line to the Southern County line, thence East and North along said line to Coosa River, thence north along said river to Walnut creek.

Place of Voting in said Precinct at Cooper's Station.

(Amended: See page 191.)



Precinct No. 6.  
Commencing at the range line between ranges 14 and 15 two miles South of the township line between Townships 21 and 22, thence East to range line between Ranges 13 and 14, thence South along said line to the Little Mulberry Creek, thence down said creek to the County Line, thence East along the county line to range line between ranges 14 and 15, thence North along said range line to place of beginning.  
Place of Voting in said Precinct to be at Shiloh Church.  
(Repealed; page 211.  
Reinstated Aug Ten 1880, page 64.)

Precinct No. 7.  
Commences where the Montgomery and Tuscaloosa Road crosses the Little Mulberry Creek, thence West along said road to the county line, thence along said county line to township line between T 20 & 21 thence East along said line to the Little Mulberry creek, thence up said creek to place of beginning.  
Place of Voting-Maplesville Depot (and Latham's).  
(Amended: See page 191,194.)

Precinct No. 8.  
Commencing where the township line between T 20 & 21 crosses Little Mulberry creek, thence West along said township line to the western county line, thence south and east along the county line to Little Mulberry Creek, thence up said creek to place of beginning.  
Voting place-Dixie.

#### 1890 FEDERAL CENSUS

REFERENCE:  
Handbook of Alabama, Saffold and Berney, pub. by The Reprint Company, Spartanburg, S.C., 1975, page 67.

Population of each county in 1890. Chilton County:

Precinct-	
1. Mims Cross Roads	1,078
2. Providence	2,079
3. Benson	1,590
4. Clanton, including Clanton town	3,018
Clanton town	623
5. Cooper, including Verbena town	3,025
Verbena	756
6. (Not Shown)	1,038
7. Maplesville	947
8. Dixie	1,774
TOTAL	14,549

#### RUNOFF ELECTION

5 April 1871 Chilton Probate Court Minutes, p. 29. Entry shows Clanton and Bensonb involved in run-off election ro location of the county seat and results are provided.

20 Jun 1872 Montgomery Daily Advertiser and Mail.  
Delegates to the State Convention-Baker County:  
J.R.Jones, J.H.Hannon,  
J.L.Williams, T.M.Fuller,  
A.J.Cooper, and J.T.Mullens.

5 Jan 1877 Chilton County Courier.  
The snow at this place was four or five inches deep on Monday, and there is still sufficient quantity to make a number of snowballs large enough to stop up a man's ear as he turns the corner.





Chilton County Historical  
Society and Archives  
P.O. Box 644  
Clanton, AL 35045



Photo Courtesy Helen E. Parrish